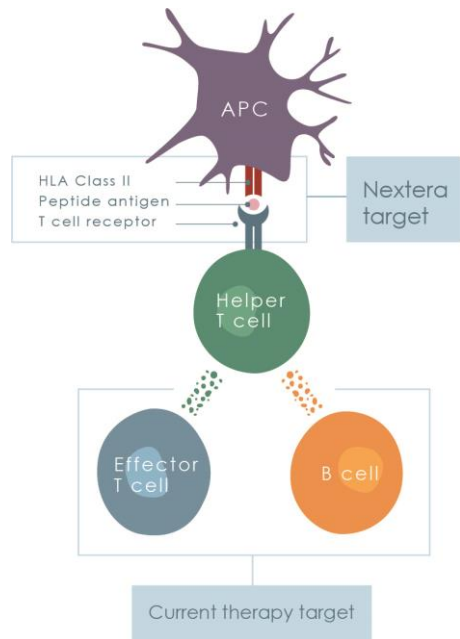


nextera

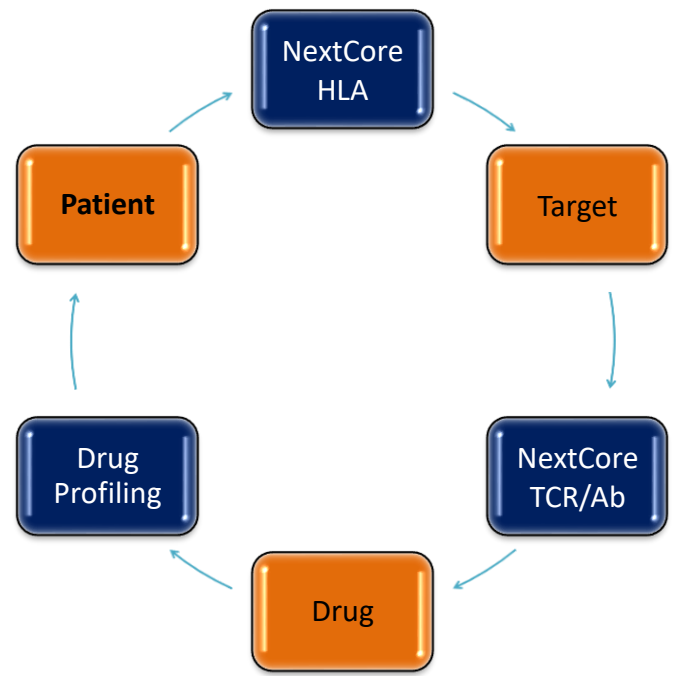
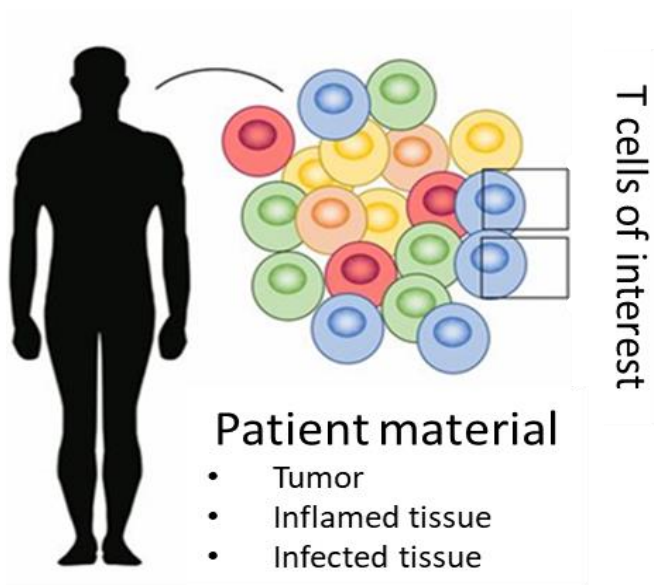


Deciphering the core of adaptive immunity

- A spin out from the world-class research environment *CoE* Centre for Immune Regulation at Oslo University Hospital
- *NextCore* - our unique target discovery and drug development platform focusing on T cell immunity
- Primary focus on immune therapy in autoimmunity and oncology
- Early stage drug candidates ready for partnering



It Starts and Ends with the Patient



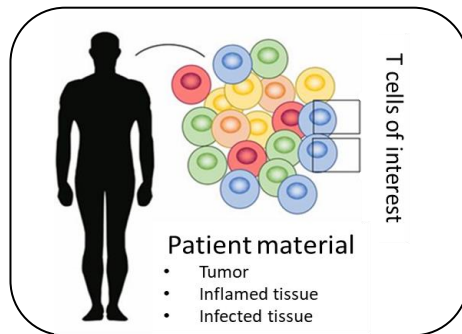
NextCore: Simplifying Drug Development for Complex Diseases

Disease complexity

Oncology

Autoimmunity

Infectious disease



NextCore-*HLA*
NextCore-*Ab*
NextCore-*TCR*

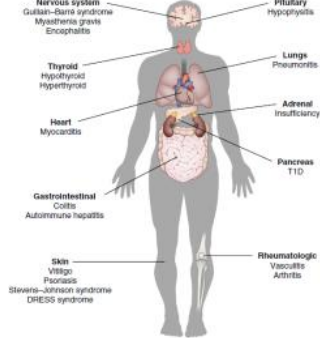
Product candidates

- **HLA-associated targets**
- **HLA-associated drugs**

Novel Targeted Therapy in Oncology

Disease complexity
Cancer

Immune-related adverse effects are associated with cancer immunotherapy



We need to make
safer and more efficacious IO
drugs

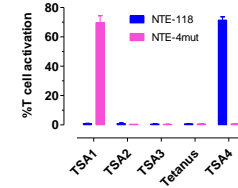
NextCore-TCR



NextCore-HLA

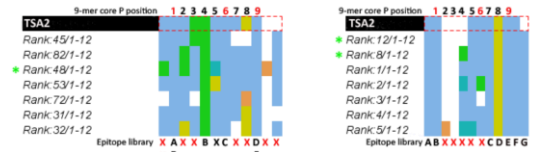
Product candidates

Redirected human T cells with
HLA-DP4 restricted anti tumor TCRs



Cancer ACT therapy without off-target reactivity

Therapeutic TCR cross reactivity profiling



Library diversity: 4x 10¹² unique entries
 Library size: 1x 10⁹ unique clones

3.4x 10⁷ unique entries
 1x 10⁹ unique clones

Characterizing potential ACT therapy off-target reactivity

Nextera's business model

Utilize the NextCore platform as an innovation engine in collaboration with partners:

- Discover novel disease specific targets in the context of HLA presentation
- Develop first-in-class candidate drugs for targets presented on HLA
 - Candidate drug generation and validation *in vitro* to be done by Nextera
 - Further development to be done by collaboration partner

